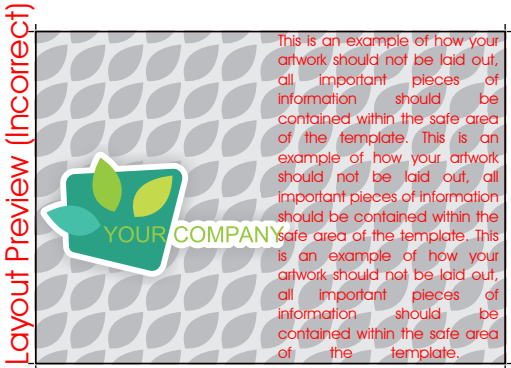
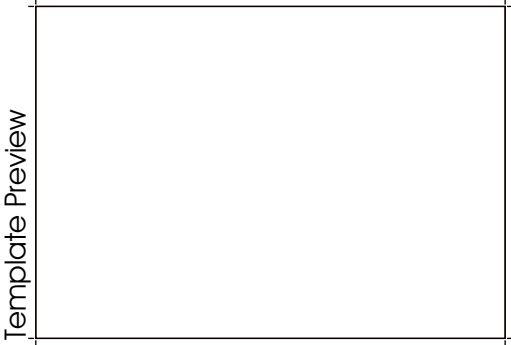


Rigid Board Printing - Direct to Board - ACM Panel (Aluminium Composite / Dibond / Diabond) - Hoarding Grade (White) - Single Sided - 1189.00mm x 841.00mm - Artwork Instructions



- Trim Line (where we cut to.)
- Safe Area (important text should be in this area)
- Finish Size (The size of the graphic area once we've finished it)

Artwork Instructions

The previews on the left demonstrate how to correctly layout your artwork within our sizing conventions.

Page 2 of this document contains a PDF template at 100% scale. Please use this document to layout your artwork.

When exporting your artwork your artwork should meet the following criteria for this product.

Document Size:	1195mm x 847mm
Print Bleed:	3.00mm
Other Bleeds:	Top Bleed - 0.00mm
	Right Bleed - 0.00mm
	Bottom Bleed - 0.00mm
	Left Bleed - 0.00mm
Finished Size:	1189mm x 841mm
Artwork Scale:	100%
DPI:	100
Fonts:	Embedded or Converted to Curves(Outlines)
Preferred File Format:	PDF
Colours:	CMYK Convert Pantone colours to CMYK.

Please name your files:
{order}-{width}x{height}x{quantity}.pdf



Document Size:	1195mm x 847mm
Print Bleed:	3.00mm
Other Bleeds:	Top Bleed - 0.00mm Right Bleed - 0.00mm Bottom Bleed - 0.00mm Left Bleed - 0.00mm
Finished Size:	1189mm x 841mm
Artwork Scale:	100%
DPI:	100
Fonts:	Embedded or Converted to Curves(Outlines)
Preferred File Format:	PDF
Colours:	CMYK Convert Pantone colours to CMYK.